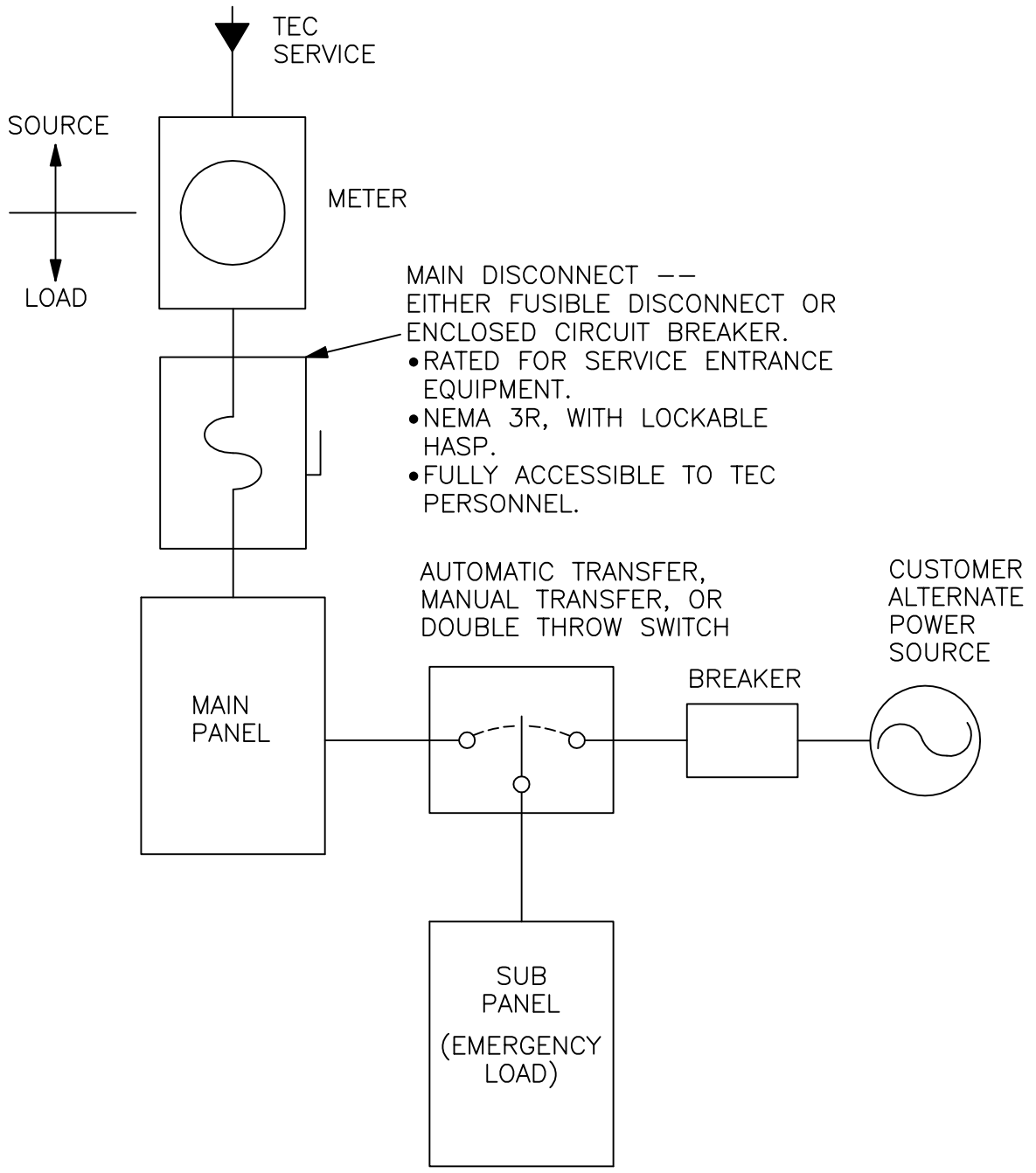


TOMBIGBEE ELECTRIC COOPERATIVE ALTERNATE SOURCE-SWITCH REQUIREMENTS

AUTOMATIC TRANSFER, MANUAL TRANSFER, OR DOUBLE
THROW SWITCH, IN MAIN POSITION (PARTIAL SERVICE TRANSFER)



NOTES:

1. TRANSFER SWITCH MUST MEET UL-1008.
2. DOUBLE THROW SWITCH MUST MEET UL-98.
3. SWITCH MUST NOT TIE THE ALTERNATE POWER SOURCE TO THE TEC SYSTEM AT ANY TIME. (OPEN TRANSITION - BOTH WAYS)
4. AUTOMATIC TRANSFER SWITCH, MANUAL TRANSFER SWITCH, OR DOUBLE THROW SWITCH MUST BE PRE-APPROVED BY TEC.

TOMBIGBEE ELECTRIC COOPERATIVE	
ALTERNATE POWER SOURCE	
CONNECTION DIAGRAMS	
DRAWN BY: DJM	DATE: 11-28-2016
APPROVED BY: LJ	DATE: 11-28-2016
DWG. NO.: A1627-1	STEWART ENGINEERING ELECTRICAL CONSULTANTS ANNISTON, ALABAMA PHONE: (256)237-0891 FAX: (256)237-1077
SHEET: 2 OF 2	
SCALE: N.T.S.	